



UNIVERSITY OF TM
KWAZULU-NATAL
INYUVESI
YAKWAZULU-NATALI

Uhlelo Lwezifundo Zendulonhle

INyuvesi YaKwaZulu-Natali, eThekwini

Kugrawundi FloYesakhiwo I Memorial Tower G014



Incwajana Yesifundo

OKUQUKETHWE

Ikhasi

Izifundo Zabangakaziphothuli iziqu

Impucuko Yendulonhle	3
Izinga Lokuqala Lwezifundo Zendulonhle:	4
Izifundo Zezinga Lesibili / Lesithathu	6

Izilimi Zendulonhle

IsiLathini	8
IsiGrikhi Sendulonhle	10

I foya yoHlelo lwezeNdulonhle iqukethe iqoqo lokusetshenziswayo kwakudala aseMeditereanean amele iminyaka engaphezu kwezi 3000 wamasiko ase-Egypt, aseGreece nawaseRome. Ezendulonhle ziphinde zibe neLAN encane ehlonyiswe ngama-skena kanye nezihlelo zamakompyutha ezihambisana nokucwaninga umhlaba wakudala kanye nomtapowolwazi omumatha izincwadi namajenali alinganiselwa ku-5000.



Uhlamvumali lutshengisa u-Alexander The Great njengoZeus

IZIFUNDO ZABANGAKAZIPHOTHULI IZIKU

IMPUCUKO ENDULONHLE

Ezendulonhle isifundo sezifundo zendulonhle, ubuciko, ne-akhiyoloji, umlando, amasiko, izilimi, nemibhlao yakudala yamaGrikhi namaRoma ngokwesimo somlando obanzi kanye nomuno womhlaba, ngokugcizela ikakhulukazi ebudlelwaneni ne Afrika.

Izifundo zempucuko endulonhle ezinikezwa wu Hlelo zimi njengalokhu okulandelayos:

	Isimesta Yokuqala	Isimesta Yesibili	Imivuzo
Izinga Lokuqala	<i>Impucuko Endulonhle 101: Amagama nemicabango yaseGreece yakudala CCCV101H1</i>	<i>Impucuko Endulonhle 102: Amagama nemicabango yase Rome yakudala CCCV102H2</i>	16
Izinga Lesibili	<i>Isifundo Sezinganeko CCCV201H1 Ezendulonhle Ezingqayini CCCV203H1</i>	<i>Impucuko Eyalahleka CCCV202H2 I-Egypt Yakudala CCCV204H1</i>	16 16
Izinga Lesithathu	<i>Isifundo Sezinganeko CCCV301H1 Ezendulonhle Ezingqayini CCCV305H1</i>	<i>Impucuko Eyalahleka CCCV302H2 I-Egypt Yakudala CCCV306H2</i>	16 16
Izinga Lesithathu	<i>Imoduli Yokwengeza CCCV303H1</i>	<i>Imoduli Yokwengeza CCCV304H2</i>	16

Ukuze ufunde uphothule ezifundweni zeMpucuko Endulonhle, udinga okungenani amamoduli ayisihlanu ezendulonhle, amabili awo kumele abe sezingeni lesithathu, uhlanganise namamoduli amabili okwengeza ezingeni lesithathu, okungaba iphrojekthi yocwaningo noma izifundo zolimi olundulonhle.

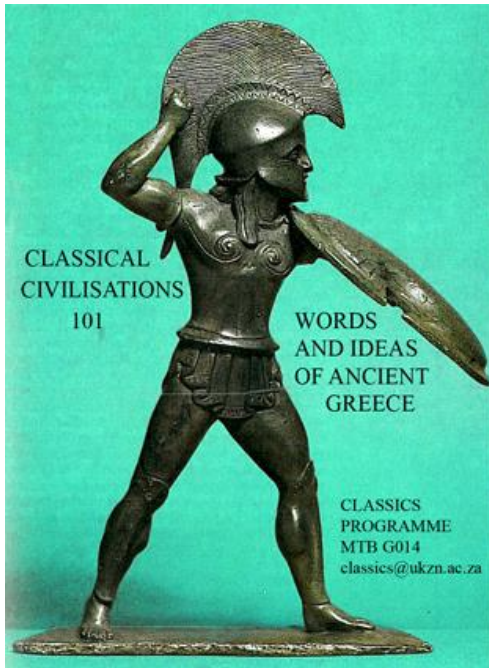
Uyoqaphela ukuthi *Isifundo Sezinganeko, Ezendulonhle ezingqayini, Impucuko Eyalahleka kanye ne-Egypt Yakudala* kunikezelwa ezingeni

lesibili nelesithathu. Abafundi kumele benze esisodwa salezizifundo ezingeni lesibili nesisodwa ezingeni lesithathu eminyakeni elandelanayo.

IZIFUNDO ZEZINGA LOKUQALA

ISIMESTA YOKUQALA

Impucuko Endulonhle 101: Amagama Nemicabango yaseGreece Yakudala (CCCV101H1)



Lesi yisifundo esiyisisekelo eMpucukweni Endulonhle. Sinikezelwa kusimesta yokuqala ezingeni lokuqala lokufunda. Le moduli igxile ku Mpucuko Endulonhle yama Grikhi, ikakhulukazi amagama nemicabango yesiGrikhi ebenomthelela osikweni lwethu lwanamuhla.

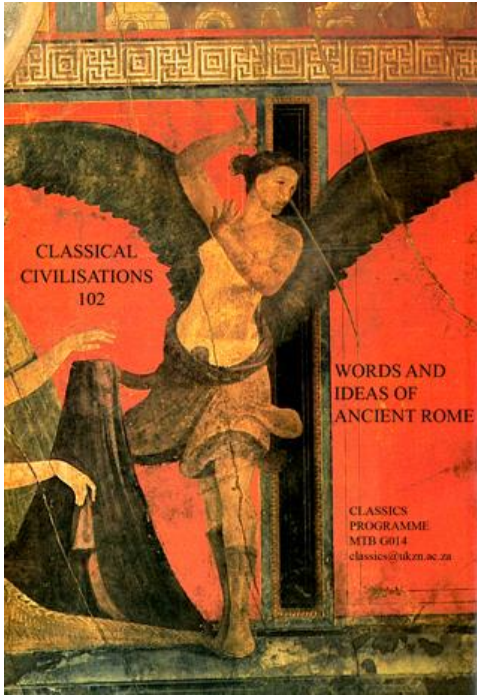
Kule moduli uzofunda amagama athile esiGrikhi asephenduke aba ingxenye yolimi lwesiNgisi, njengegama elithi 'Democracy'. Uzofunda ukuthi kungani lamagama abunjwa, akhiwe kanjani, asitshela ukuthini ngosiko lwamaGrikhi, nanokuthi kungani esayingxenye ebalulekile kusilulumagama sethu. Kunamagama amaningi esiGrikhi asasetshenziswa esiNgisini emikhakheni eminingi eyahlukene yemfundo, njengomumo womhlaba, ezokwelapha (ezemithi yokwelapha), nesayensi, umthetho nezepolitiki, ezohwebo nezomnotho, ifilosofi nezenqondo, ezobuciko, nezezakhiwo, ezomlando kanye neze-akhiyoloji. Uzofunda amanye alamagama nendawo yawo ngobubanzi osikweni nasemphekathini wamaGrikhi jikelele.

Ukuhlola: Imaki Leklasi (50% ithuthoriyali kanye nemisebenzi yokwenziwayo); Izivivinyo & Izivivinyo Zokuphela Konyaka (50%)

IZIFUNDO ZEZINGA LOKUQALA

ISIMESTA YESIBILI

Impucuko Eklasikhali 102: Amagama Nemicabango yaseRoma yakudala (CCCV102H2)



Lesi yisifundo esiyisekelo eMpucukweni Endulonhle. Sinikezelwa kusimesta yesibili ezingeni lokuqala lokufunda. Ukugxila kwalemoduli yiMpucuko yamaRoma, ikhakhulukazi amagama nemicabango yesiLathini ebenomthelela osikweni lwethu lwanamuhla. IsiLathini kwabawulimi olwalukhulunywa ngabahlali abaningi boMbuso wamaRoma.

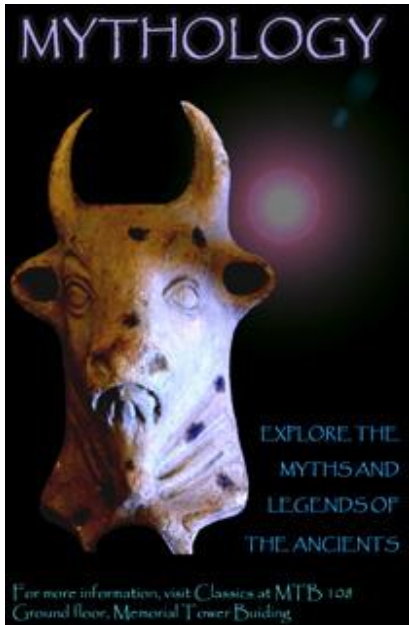
Kule moduli uzofunda amanye amagama esiLathini asephenduke ingxenye yolimi lweSingisi. Uzofunda ukuthi kungani lamagama abunjwa, akhiwe kanjani, asitshelani ngosiko lwamaRoma nanokuthi kungani esayingxenye ebalulekile kwisilulumagama sethu. Kunamagama amaningi esilathini asasetshenziswa esiNgisini emikhakheni eyahlukene yokufunda njengomumo womhlaba, ezokwelapha (imithi yokwelapha) nesayensi, umthetho nezepolitiki, ezohwebo nezomnotho, ifilosofi nezengqondo, ezobuciko nezezakhiwo, ezomlando ne-akhiyoloji. Uzofunda amanye alamagama nendawo yawo ngokubanzi osikweni nasemphakathini wamaRoma jikelele.

Ukuhlola: Imaki Leklasi (50%) ithuthoriyali kanye nemisebenzi yokwenziwayo); Isivivinyo & Isivivinyo Sokuphela Konyaka (50%)

IZIFUNDO ZEZINGA LESIBILI / LESITHATHU

ISIMESTA YOKUQALA

Isifundo Sezinganeko (CCCV201H1 / CCCV301H1)



Inhloso yale moduli ukulekelela abafundi ukuthi baqonde isimo sesifundo sezinganeko nemisebenzi yayo emphakathini. Ithinta isifundo sezinganeko zaseGreece neyaseRome yakudala (ukuhlanganisa okushiwo emibhalweni nobuciko nokuqhathanisa nezinye izinganeko zakwamanye amasiko, akudala nawamanje. Ihlola izinganeko ezinobuNkulunkulu, izinganeko zobuqhawe, izinganeko zakudala, ama-saga, nezinganeko ngemibhalo. Ingxenye yaleseisifundo inikelwe esifundweni sezinganeko zase Afrika, enye ekwamukelweni kwezinganeko zamaGrikhi emidlalweni yeshashalazi nasemibhalweni yase (Ningizimu)

Afrika.

Ukuhlola: Imaki Lekilasi (50%); Isivivinyo Sokuphela Konyaka (50%)

Ezendulonhle ezingqayini (CCCV203H1 / CCCV305H1)



Inhloso yale moduli ukwethula abafundi ekufundeni ngokwemukelwa komlando wakudala nemibhalo eklasikhali yesiGrikhi nesiLathini emafilimini, kanye nokuphenya ukuthi izindikimba zomlando wakudala noma imibhalo

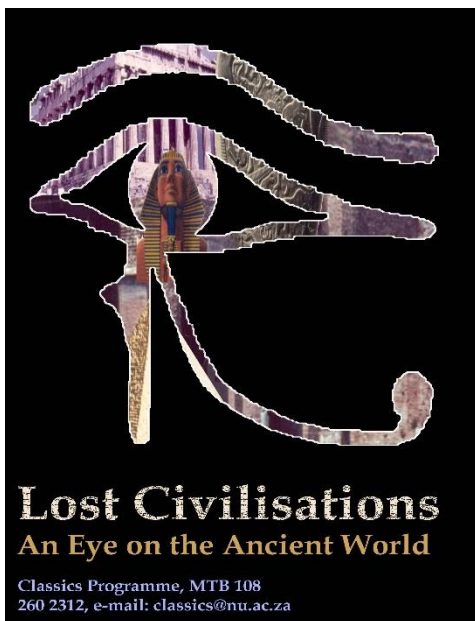
endulonhle lapho kusekelwe khona lamafilimu. Isifundo sethula abafundi emibonweni emibili eyahlukene yomhlaba wakudala: imisebenzi

esamlando neyimibhalo, njengoba singakwazi ukuyakha kabusha siyisusela emithonjeni yethu yakudala kanye nokuvezwa kwayo ngokwama sinema (bhayisikobho) okwakhiwa imboni yezamafilimu ikwakhela ababuki bayo. Ukugxila kulesisikhala, kuzoxoxwa ngeqoqo lezingqayi, ukusukela kuHolywood endulonhle kuya ku sinema yobuciko.

Ukuhlola: Imaki Leklasi (50%); Isivivinyo Sokuphela Konyaka (50%)

ISIMESTA YESIBILI

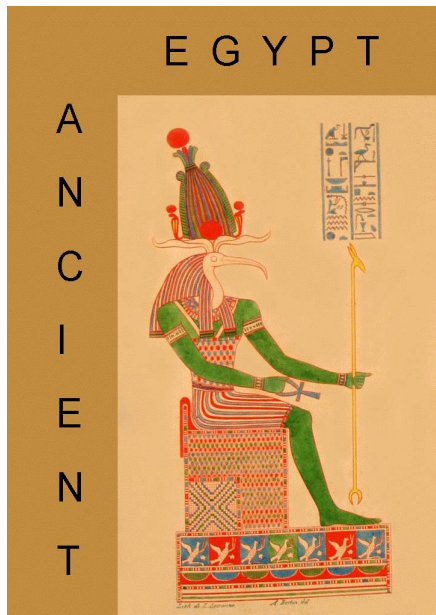
Impucuko Eyalahleka (CCCV202H2 / CCCV302H2)



Inhloso yale moduli ukuhlola okuyizinkomba zempucuko yakudala yase Mediterranean. Imoduli ifundiswa ngezifundo ezikhonjiswayo Kanye nama thuthoriyeli kanti futhi imbandakanya ukucwaningwa kwezindawo ze-akhiyoloji nokusetshenziswayo kanye nemiqulu yokubhaliwe, njenge Bronze Age Aegean, impucuko esasifundo sezinganeko njenge Atlantis, umhlaba wamaRoma njengoba ugciniwe kuPompeii, izindawo e-Afrika esenyakatho esaRomu njengeCarthage nempucuko yase-Afrika, isibonelo iGreat Zimbabwe neEthiopia.

Ukuhlola: Imaki Leklasi (50%); Isivivinyo Sokuphela Konyaka (50%)

I-Egypt Yakudala (CCCV204H2 / CCCV306H2)



Inhloso yalemoduli ukwethula abafundi ekucwaningweni nge-Egypt yakudala esikhathini soFaro, sePtolemaic, samaRoma, nesobuKristu. IGibhithe yakudala inikeza ngezinsiza kusebenza ezehlukile zokucwaninga izikhumbuzo ze-akhiyoloji ezinjengamaphiramidi kanye nezilondolozamlando kanti futhi kuzovusa ilukuluku kubafundi bezakhiwo nezeNdulonhle. I-Egypt yakudala inomlando ocebile wezobuciko kanti nabafundi bezobuciko bokudweba (Fine Art) bazosithola lesifundo sibanikeza lukhulu. Okubaluleke kakhulu, nokho, lesisifundo siyingxenye ebalulekile kubafundi abanothando lwezokuVuselelwa kwe-Afrika (African Renaissance) kanye nemvelaphi yosiko lwabantu. Imoduli izongena kunkulumompikiswano yeBlack Athena okuyovusa ilukuluku kubafundi Bezepolitiki, Anthropology, kanye Nezomlando. Kukhona futhi ingxenye ngo Kwamukelwa kweGibhithe yakudala, ikakhulukazi osikweni lwanamuhla.

Ukuhlola: Imaki Leklasi (50%); Isivivinyo Sokuphla Konyaka (50%)

IZILILMI EZINDULONHLE

ISILATHINI

IsiLathini saba ‘wulimi lokuqala lomhlaba’ ngaphansi kombuso wamaRoma, saqhubeka nokuba ulimi lwesayensi, ifilosofi, inkolo, nokufunda nokucwaninga amakhulukhulu eminyaka. Ngisho ulwazi oluncane lwesiLathini lunikeza umqondo owehlukile ngezimpande zosikompilo lwaseNtshonalanga.

Akudingeki lwazi olwedlule lwesiLathini ezingeni eliyisingeniso (CCLT101). Izakhiwo ezibalulekile zokwakheka kolimi kanye nesilulumagama zethulwa esimweni sokufunda izigatshana, ngokuhlanganisa ndawonye neminye imisebenzi eyinsukelakuyo emphakathini nasosikweni lwamaRoma. Incwadi yi-Oxford Latin Course, egxilisa ukulandisa kwayo eminyakeni yokugcina yombuso wamaRoma.

Ukuze baphothule olimini lwesiLathini, abafundi badinga ukuthi bathathe wonke lama moduli alandelayo ayisithupha: IsiLathini 1A, IsiLathini 1B, IsiLathini 2A, IsiLathini 2B, IsiLathini 3A, kanye nesiLathini 3B. Isifundo ngasinye siyisidingo esiyisandulelo sesilandelayo. Emuva kwamasimesta amathathu encwadi nesakhiwo solimi, abafundi kumele bakwazi ukuqala ukufunda okuthile okukhethiwe kubabhali besiLathini, baqale ngezinkondlo zothando zikaCatullus baqhubekele emibhalweni ecubungulayo kaCicero, inkondlomlando i-Aeneid kaVergil, izinkondlo ezisamculo nezingamasathaya zikaHorace nabanye ababhali.

Ukuhlola: Imaki Leklasi (50%); Isivivinyo Sokuphela Konyaka (50%)



Vergil: Vergilius Romanus fol. 3v, 5th. cent. CE

*et iam summa procul uillarum culmina fumant
maioresque cadunt altis de montibus umbrae.*

Bheka laphaya- intuthu isiyaphakama ophahleni lwezindlu
Kuvela amathunzi adalwa ubude bezintaba.

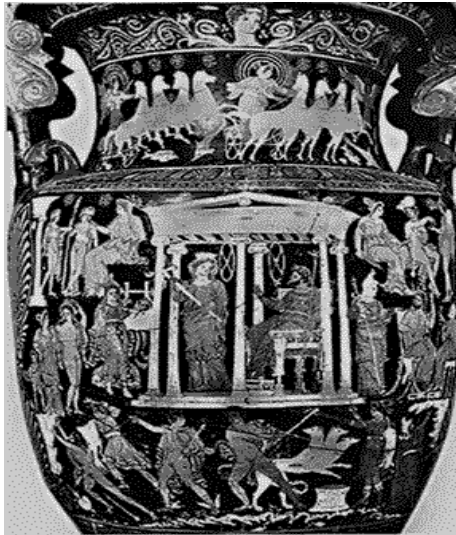
Vergil *Eclogue* 1.82-83 tr. C. Day Lewis

Ukubaluleka kwesiLathini Kwezemisebenzi

Abafundi abanothando lwezilimi bazothola ukufunda isiLathini kuwusizo, njengoba kunikeza ithuba lokufinyelela esakhiweni nakusilulumagama sezilimi ezinjengesifrentshi, Isintaliyano, Isipanishi, IsiPutukezi kanye nesiNgisi. Siyahambisa nefilosofi, nomlando wakudala nowakamuva, ezezilimi nezomthetho, siphinde sihlonishwe ngeqhaza laso ekukwazini ukubeka ukusho into ngendlela eqonde ngqo namakhono okulandelanisa ngendlela nokuhlaziya. Kothisha abafisayo, isiLathini siyafundiswa ezikoleni ezithile eNingizimu Afrika nasezikoleni eziningi eBritain nase-US.

Abafundi bezomthetho bazokuthola ukufunda isiLathini kuwusizo kakhulu njengoba isiLathini sisetshenziswa kakhulu emibhalweni yezomthetho.

ISIGRIKHI ESINDULONHLE



Uhlelo lwezendulonhle, ITheku, linikeza ngethuba lokugogoda ezifundweni zesiGrikhi esindulonhle. Isifundo esiyisingeniso, isiGrikhi 1A (CCGK101), siqala ekuqaleni ngezinhlamvu zokubhala zesiGrikhi. Incwadi esetshenziswayo uM. Balme noG. Lawall, Athenaze: *An Introduction to Ancient Greek. Book 1*. Oxford: Oxford University Press, 1995. Le ncwadi yanamuhla inikeza okuningi okufundwayo okuvusa ilukuluku kuphelezela imisebenzi ekunikeza ithuba lokuziqeqesha ekuqondeni nasekubhaleni isiGrikhi. Isahluko ngasinye sichaza ngomlando wolimi ngokwamasiko. Ukuze uphuthule kusiGrikhi esindulonhle, abafundi kumele bathathe wonke lama moduli ayisithupha alandelayo: IsiGrikhi 1A, IsiGrikhi 1B, IsiGrikhi 2A, IsiGrikhi 2B, IsiGrikhi 3A kanye nesiGrikhi 3B. Isifundo ngasinye siyisidingo esiyisandulelo sesifundo esilandelayo. Emuva kwamasimesta amathathu encwadi nokwakheka kolimi, abafundi kumele bakwazi ukuqala ukufunda isiGrikhi kanye nokufunda ababhali abanjengoHomer, uPlato, uHerodotus, uLongus nabanye abaningi.

Ukuhlola: Imaki Leklasi (50%); Isivivinyo Sokuphela Konyaka (50%)

Umsebenzi omfishane ocashunwe kuIliad kaHomer unikezwe lapha ngezansi. Lo msebenzi uchaza ukuhlukana komhlaba uba isibhakabhaka, ulwandle nomhlaba ongaphansi, olawulwa uZeus, uPoseidon noHades. Lo mdwebo ongaphezulu oyivazi utshengisa ngoPersephone noPluto besemhlabeni ongaphansi.

Njengoba singabafowethu abathathu abazalwa uRheia kuKronos

UZeus nami, owesithathu uHades, inkosi yabafuleyo.

Konke kwahlukaniselwa thina sobathathu, emunye wanikezwa indawo yakhe

Mina ngenkathi okuningi kunyakaziswa, ngadonsa ulwandle olumpunga ukuze ngihlale kulona ingunaphakade, uHades wadonsa inkungu nobumnyama okuningi, kanti uZeus wanikezwa isibhakabhaka esibanzi, emafini nasemoyeni okhanyayo.

Homer *Iliad* 15.187-192 tr. R. Lattimore (1951).

Ukubaluleka KwesiGrikhi Kwezemisebenzi

Ukufunda isiGrikhi esindulonhle kunikeza isisekelo esihle kakhulu sokufunda izilimi, ikakhulukazi isiNgisi. Ingxenye eningi yesilulumagama sesiNgisi semfundo ephakeme isuselwa kusiGrikhi sakudala nokufunda ulimi kuyonikeza abafundi ukuqonda okuhle kakhulu kwemiqondomsuka yokwakheka kolimi nje jikelele. IsiGrikhi seTestamente Elisha siyoba wusizo olukhulu kubafundi abafisa ukungena emsebenzini wenkolo yobuKhrestu. Njengamanje, isiGrikhi seTestamente Elisha noma esi Helenistikhi siyafundiswa wuHlelo LweTiyoloji ekhampasini yaseMgungundlovu kuphela.

Mayelana nolwazi oluthe thuthu ngoHlelo Lwezendulonhle eUKZN

luyatholakala kuwebhusayithi yethu:

<http://srpc.ukzn.ac.za/Homepage.aspx>

<https://www.facebook.com/ClassicsUKZN/?fref=ts>